

Description

Proportional pressure regulator with closed loop control technology for better control of pressurised gases. The instrument can be built as single closed loop or dual closed loop control valve. dry, lubricated or unlubricated and 5 µm filtered compressed air or non-corrosive gases

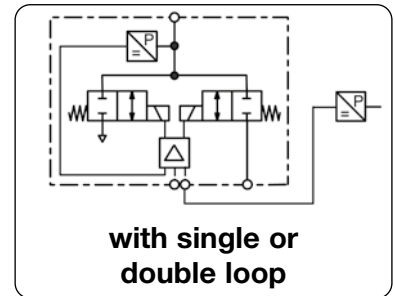
constant outlet pressure at voltage drop
 0...10 V, impedance 4.7 kΩ, ratio of internal to external relationship is 10% to 90%

Fail freeze
 Second loop
 Supply voltage
 Impedance
 Monitor signal
 Electrical connection
 Power consumption
 Linearity / Hysteresis
 Temperature influence
 Temperature range
 Material

15...24 V DC, residual ripple < 10%, with reverse voltage protection
 0...10 V / 4.7 kΩ, 4...20 mA / 100 Ω, jumper selectable command
 0...10 V at max. 10 mA
 terminal strip for 2.5 mm²
 3.6 W regulating, 0.5 W non-regulating
 < 0.15% FS
 < 1% FS at 0 °C to 50 °C / 32 °F to 122 °F
 0 °C to 70 °C / 32 °F to 158 °F
 Ports: brass
 Transducer: aluminium and silicon

Air consumption
 Repeatability
 Adjustment
 Mounting position
 Elastomer:
 Valves:

without constant bleed
 < 0.02 FS
 zero point and span
 any, vibration-resistant
 FKM
 nickel-plated brass



with single or double loop

Dimensions			Flow rate	Supply pressure	Accuracy	Connection thread	Pressure range	Order number
A	B	C	l/min*1	max. mbar/bar	%	G	mbar/bar	
mm	mm	mm						E*

Proportional press. regulator								0-10 V input and monitor signal, supply voltage 24 V DC, fail freeze, single loop for DIN rail	PM
56	78	54	35	10 mbar	0.2	G1/8	0... 5 mbar	PM1DE-A5	
				20 mbar			0... 10 mbar	PM1DE-B1	
				200 mbar			0... 100 mbar	PM1DE-C1	
				1 000 mbar			0... 600 mbar	PM1DE-C6	
56	78	54	35	2 bar	0.2	G1/8	0... 1 bar	PM1DE-01	
				3 bar			0... 2 bar	PM1DE-02	
				9 bar			0... 4 bar	PM1DE-04	
				9 bar			0... 6 bar	PM1DE-06	
				15 bar			0... 10 bar	PM1DE-10	
56	78	54	35	2 bar	0.2	G1/8	0... -1 bar	PM1DE-V0	
				2 bar			-1... +1 bar	PM1DE-V1	



PM . D
DIN rail mounting



PM . P
panel mounting



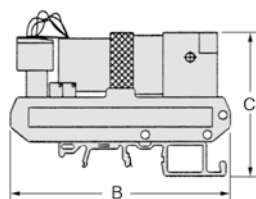
PM . M
mounting on manifold block

Special options, add the appropriate letter

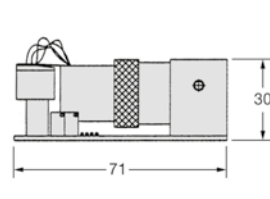
double loop	second loop feedback 0...10 V	PM2
4-20 mA	supply signal, jumper selectable command	PM I . . .
flow 100 l/min	increased flow rate	PM HF
panel mounting	on plane level	PM . P . . .
mounting for manifolds	connections downwards	PM . M . . .

Accessories, enclosed

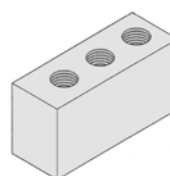
manifold block for 2 to 7 valves number of valves added to order number **SBM-**



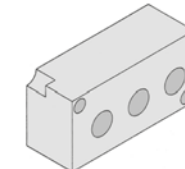
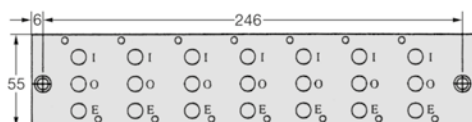
PM . D for DIN rail



PM . P for panel mounting



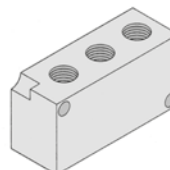
PM . D for DIN rail



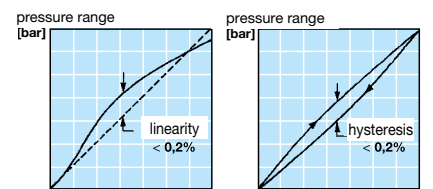
PM . M for manifold block



manifold block for 2 to 7 valves

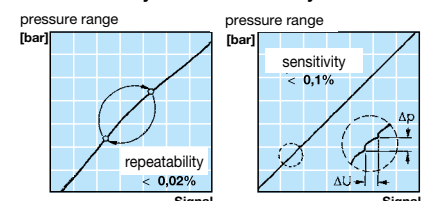


PM . P for panel mounting



linearity

hysteresis



repeatability

sensitivity

*1 at 7 bar supply pressure and open outlet, at regulated flow rate of 3 l/min
 *2 higher supply pressures on request

* Product group

For further details about double loop see PQ2

PDF CAD
www.aircom.net



Order example:
PM1DE-A5